



INTRODUCING THE

microArch S350

25µm

The microArch S350 combines high part quality with increased speed and throughput. With increased ease of use and built-in automation, the S350 is BMF's highest throughput printer designed for end part production.

Our newest platform, the microArch S350 is a 25µm platform which can be used not only for printing micro-scale parts with high-resolution features, but also for a broader range of small parts requiring high accuracy or precision. The microArch S350 is perfect for researchers and manufacturers for prototyping and production in the 1000-30,000 part volume range for parts requiring ultra-high resolution, accuracy, and precision.



Features

- Automated lateral membrane shift - enables automated part removal with option for robotic integration
- Auto resin adjustment with resin cassette
- Laser displacement sensor
- Advanced roller system spreads layers in seconds
- Larger DLP chip → 6 projection zones - resulting in faster printing speeds

System	DIMENSIONS	1350 x 850 x 1900mm
	WEIGHT	500kg
Performance	BUILD SIZE	100 x 100 x 50mm
	PRINTING MATERIAL	Photosensitive resin, ceramic
	XY RESOLUTION	25µm
	XY POSITIONAL ACCURACY	± 1µm
	LAYER THICKNESS	10-50µm
	SURFACE FINISH	0.4-0.8µm Ra (top) 1.5-2.5µm Ra (side)
Facility	POWER SUPPLY	2000w
	ELECTRICAL REQUIREMENT	110 - 120 VAC, 50-60hz, Single Phase, 10 Amps 220 - 240 VAC, 50-60hz, Single Phase, 5 Amps

microArch S350

feature resolution

Compared minimum feature size @ $\pm 50\mu\text{m}$ tolerance

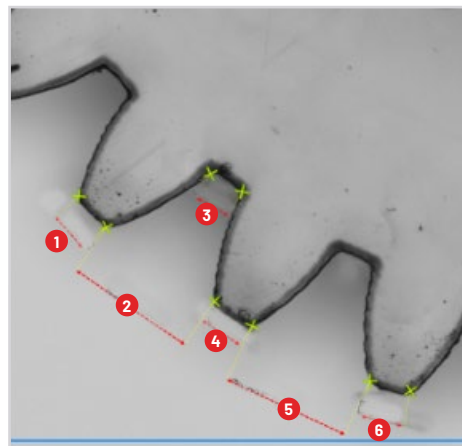


Gear

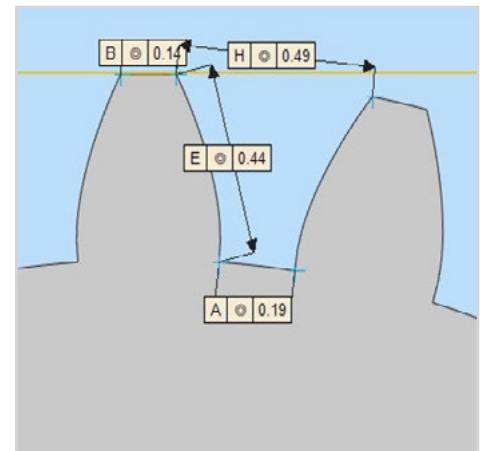
DIMENSIONS 6mm x 6mm x 5mm

RESOLUTION 25 μm

TOLERANCE $\pm 0.050\text{mm}$



1 0.152mm 2 0.481mm 3 0.133mm 4 0.165mm
5 0.476mm 6 0.153mm

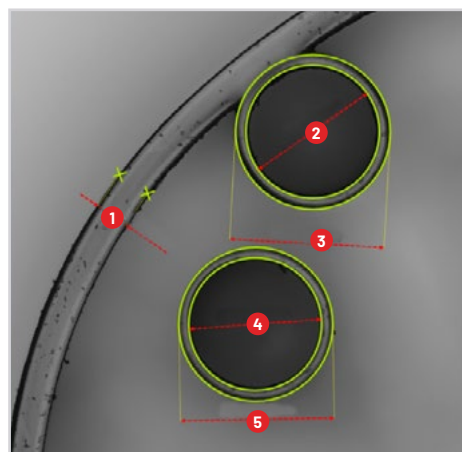


Endoscope Shell

DIMENSIONS 9.8mm x 9.8mm x 13.8mm

RESOLUTION 25 μm

TOLERANCE $\pm 0.050\text{mm}$



1 0.254mm 2 0.999mm 3 1.159mm 4 0.996mm 5 1.154mm

